

## CODE 52063

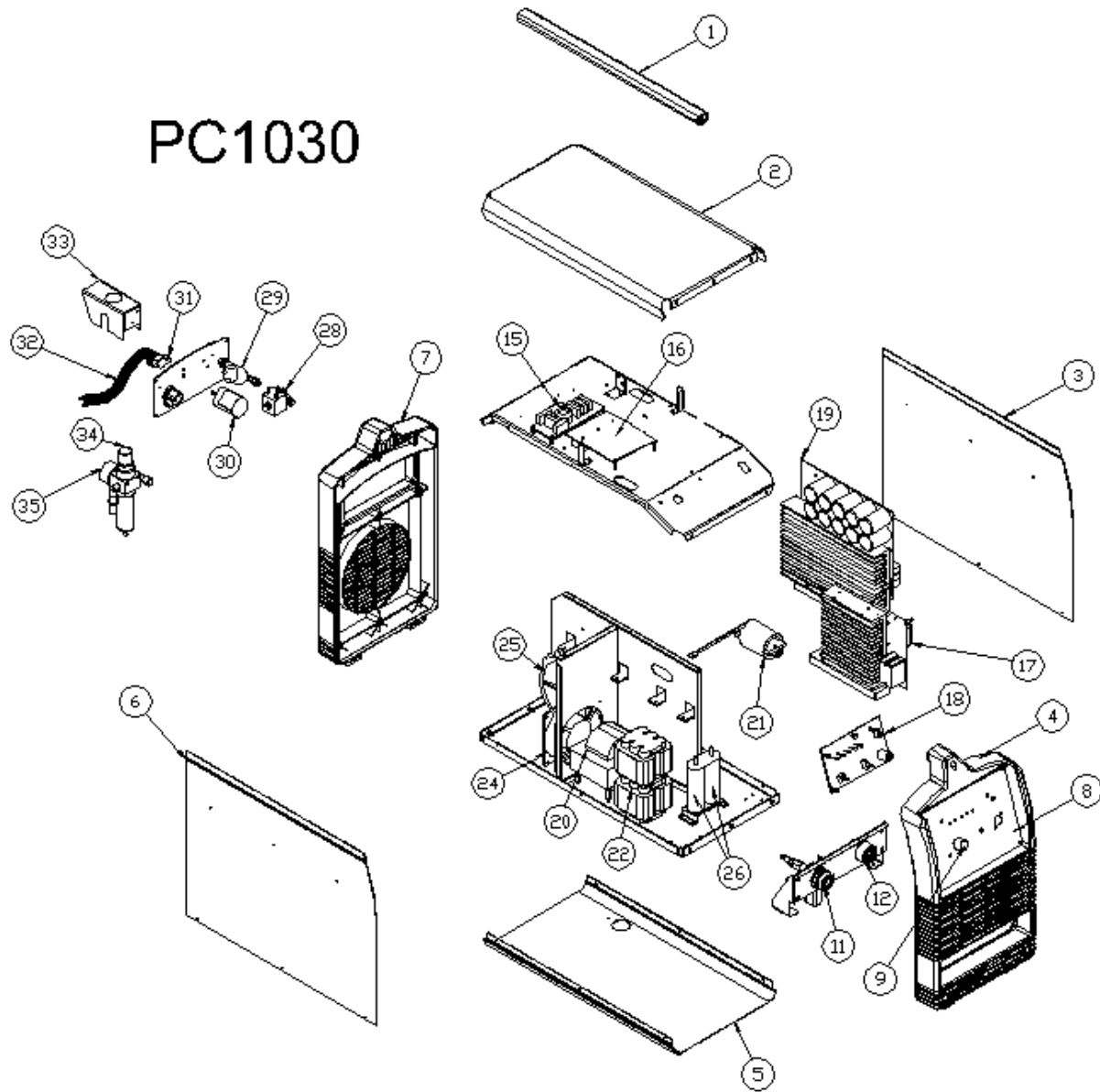
|                       |             |                  |   |
|-----------------------|-------------|------------------|---|
| ASSEMBLY<br>PAGE NAME |             | Machine Assembly |   |
| CODE<br>NO.:          | FIGURE NO.: |                  | A |
| 52063                 | PC1030      |                  | 1 |

**Figure A: Machine Assembly**

| Item | Description                   | Part Number | QTY | 1 |
|------|-------------------------------|-------------|-----|---|
| 1    | HANDLE                        | W92X0375-1R | 1   | X |
| 2    | WRAPAROUND TOP                | W93X0606R   | 1   | X |
| 3    | WRAPAROUND LEFT               | W93X0602R1  | 1   | X |
|      | + SIDE NAMEPLATE              | W07X0865-1R | 1   | X |
| 4    | FRONT PANEL                   | W95X0355R   | 1   | X |
| 5    | EXTERNAL BASE                 | W93X0387R   | 1   | X |
| 6    | WRAPAROUND RIGHT              | W93X0601R1  | 1   | X |
|      | + SIDE NAMEPLATE              | W07X0865-2R | 1   | X |
| 7    | REAR PANEL                    | W95X0356R   | 1   | X |
| 8    | CONTROL PANEL                 | W93X0798R   | 1   | X |
|      | + FRONT NAMEPLATE             | W07X0864R   | 1   | X |
| 9    | KNOB                          | W8700030R   | 1   | X |
| 11   | TORCH SHROUD                  | W03X0933R   | 1   | X |
| 12   | DINSE CONNECTOR               | W7600025R   | 1   | X |
| 15   | FILTER P.C. BOARD             | W0518600R   | 1   | X |
| 16   | INPUT PI400 P.C. BOARD        | W052790MR   | 1   | X |
| 17   | OUT 100A P.C. BOARD           | W052990KR   | 1   | X |
| 18   | SCTP96 LIFT P.C. BOARD        | W05X0468R   | 1   | X |
| 19   | INVERTER P.C. BOARD           | W05X0638R   | 1   | X |
| 20   | INDUCTOR OUT 100A             | W5894241R   | 1   | X |
| 21   | INDUCTOR                      | W5894280R   | 1   | X |
| 22   | TRASFORMER OUT 100A           | W5994242R   | 1   | X |
| 24   | FRONT FAN                     | W7200004R   | 1   | X |
| 25   | SIDE FAN (MAIN)               | W7200007R   | 1   | X |
| 26   | RESISTOR 50OHM 80W            | W1820504R   | 2   | X |
| 28   | ELECTROVALVE                  | W8500010R   | 1   | X |
| 29   | PRESSURE SWITCH               | W8800019R   | 1   | X |
| 30   | MAIN SWITCH                   | W7511703R   | 1   | X |
| 31   | CABLE CLAMP                   | W8403222R   | 1   | X |
| 32   | INPUT CORD                    | W78X0940R   | 1   | X |
| 33   | PRESSURE REGULATOR<br>SUPPORT | W93X0583R   | 1   | X |
| 34   | PRESSURE REGULATOR            | W8800021R   | 1   | X |
| 35   | PRESSURE METER                | W8800018R   | 1   | X |
| 36   | CAPACITOR ASSEMBLY            | W66X0673R   | 1   | X |

**Miscellaneous Items (not showed in figure A)**

| Item | Description     | Part Number | QTY | 1 |
|------|-----------------|-------------|-----|---|
|      | TIME DELAY FUSE | W7300500R   | 1   | X |



**Figure A**